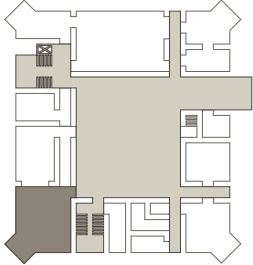


### 1 Camers Schlossrestaurant

**Capacity: 45 people**

Camers Schlossrestaurant is located on the castle's ground floor. It provides a true castle atmosphere in its vaulted room overlooking the moat.

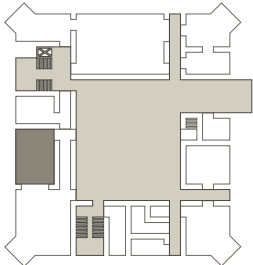


### 2 Camers Stüberl

**Capacity: 20 people**

The Camers Stüberl is located on the castle's ground floor. It provides a true castle atmosphere in its vaulted room overlooking the moat.

Booked together with "1":  
**Capacity: 70 people**

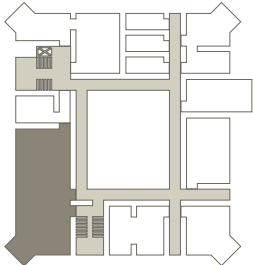


### 3 Schloßsaal

**Capacity: 100 people**

The elegant and high room Schloßsaal (Castle Hall) is located in the heart of the castle, on the first floor.

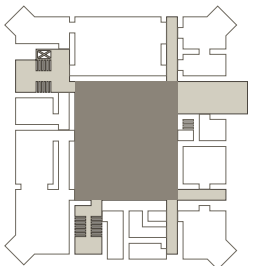
For weekend weddings we offer the "Castle Package", which includes the use of the Schloßsaal together with the castle courtyard.



### 4 Castle courtyard

The castle courtyard is the ideal place to enjoy cocktails, hold receptions, etc.

For weekend weddings we offer the "Castle Package", which includes the use of the Schloßsaal together with the castle courtyard.



**5 Cotta-Saal**

**Capacity: 70 people**

Timelessly elegant, the Cotta-Saal is located on the Gutshof's ground floor, in the high-ceilinged rooms of the castle's former brewery. It has a large foyer with a counter and bar tables.



**6 Cotta-Terrace**

**Capacity: 70 people**

Enclosed by hedges the Cotta-Terrace is located directly behind the Cotta-Saal. In summer, the terrace can be used instead of the Cotta-Saal.



**7 Cotta-Bar**

**Capacity: 70 people**

The Cotta-Bar is located opposite the Cotta-Saal. It is the ideal venue to end a beautiful function.



**8 Club room**

**Capacity: 19 people**

The private Clubraum of the Cotta-Bar offers a cosy atmosphere for smaller parties and comes with its own foyer.





**9 Gutshof-Restaurant**

**Capacity: 160 people**

The Gutshof-Restaurant is located on the Gutshof's first floor. It is impressive with its spaciousness and high ceilings, and its lighting provide an interesting focal point.



**10 Gutshofplatz**

The sprawling Gutshofplatz is situated between castle and Gutshof and is suitable for big weddings, extravagant events, the presentation of automobiles or can accommodate market stalls, exhibitions, concerts, etc.



**11 Gutshof-Foyer**

**Capacity: 280 people**

The Gutshof-Foyer spans the ground and first floor of the Gutshof. The spacious room, ideal for communicating and networking, is also suitable for receptions, trade fairs and exhibitions. In summer on the occasion of bad weather, weddings are held in the foyer instead of the Gutshofplatz.



**12 Biergarten am Schlosspark**

**Capacity: 300 people**

The beer garden and its roofed Remise (shed) with a wooden floor (120 seats) are located at the back of the Gutshof.

Only the Remise and Heckengarten can be rented separately on occasion.



**13 Heckengarten**

**Capacity: 40 people**

The Heckengarten (rear garden) is a cosy space within the beer garden – shielded by surrounding hedges. It offers privacy for functions on beautiful days between May and September.



14 **Patio**

**Capacity: 100 people**

The bright, open and cathedral-like patio is located on the ground floor of the hotel's House B. It provides an ideal setting for exhibitions, receptions and presentations, as well as civil marriage ceremonies.

For marriage ceremonies we offer a package, which includes the seating.



15 **Mariengarten**

**Capacity: 100 people**

The romantic Mariengarten is located on the sunny side of the hotel and surrounded by an old wall. This wonderful outdoor space is decorated with a statue of the Virgin Mary and makes for an ideal space for your function or event.



16 **Birkenwiese**

**Capacity: 180 people**

Together with the castle in the background, the romantic Birkenwiese (birch meadow) in the Schlosspark forms the ideal setting for your celebration or event.



17 **Haslangkeller**

**Capacity: 70 people**

The Haslangkeller is located in the basement of the hotel's House B. Our "Bierstüberl" is simple, quaint and cozy and located next to the bowling alley. The Haslangkeller can also be booked for parties without service.





18 **Event hall**

**Area: 1,200 sqm**

Everything that requires space can take place here, from team events and archery in bad weather, to training on the climbing wall or the presentation of new car models, a badminton tournament, a concert, or the celebration of a company anniversary, etc.



19 **Bowling alley**

The bowling alley, located right next to the Haslangkeller, offers one alley and a lot of fun for smaller groups.



20 **Football pitch**

On the illuminated football pitch, located directly behind the castle, volleyball and badminton can also be played (nets available).



21 **Boules pit**

The boules pit is adjacent to the football pitch in the park behind the castle.



# Schloss Hohenkammer

## Site plan

Schloss Hohenkammer GmbH  
 Schloßstrasse 18–25  
 85411 Hohenkammer, Germany  
 Phone +49 (0)8137 93 40  
 Fax +49 (0)8137 93 43 90  
 mail@schlosshoenkammer.de  
 www.schlosshoenkammer.de

### Castle

- 1 Camers Schloss-restaurant
- 2 Camers Stüberl
- 3 Schloßsaal
- 4 Castle courtyard

### Gutshof

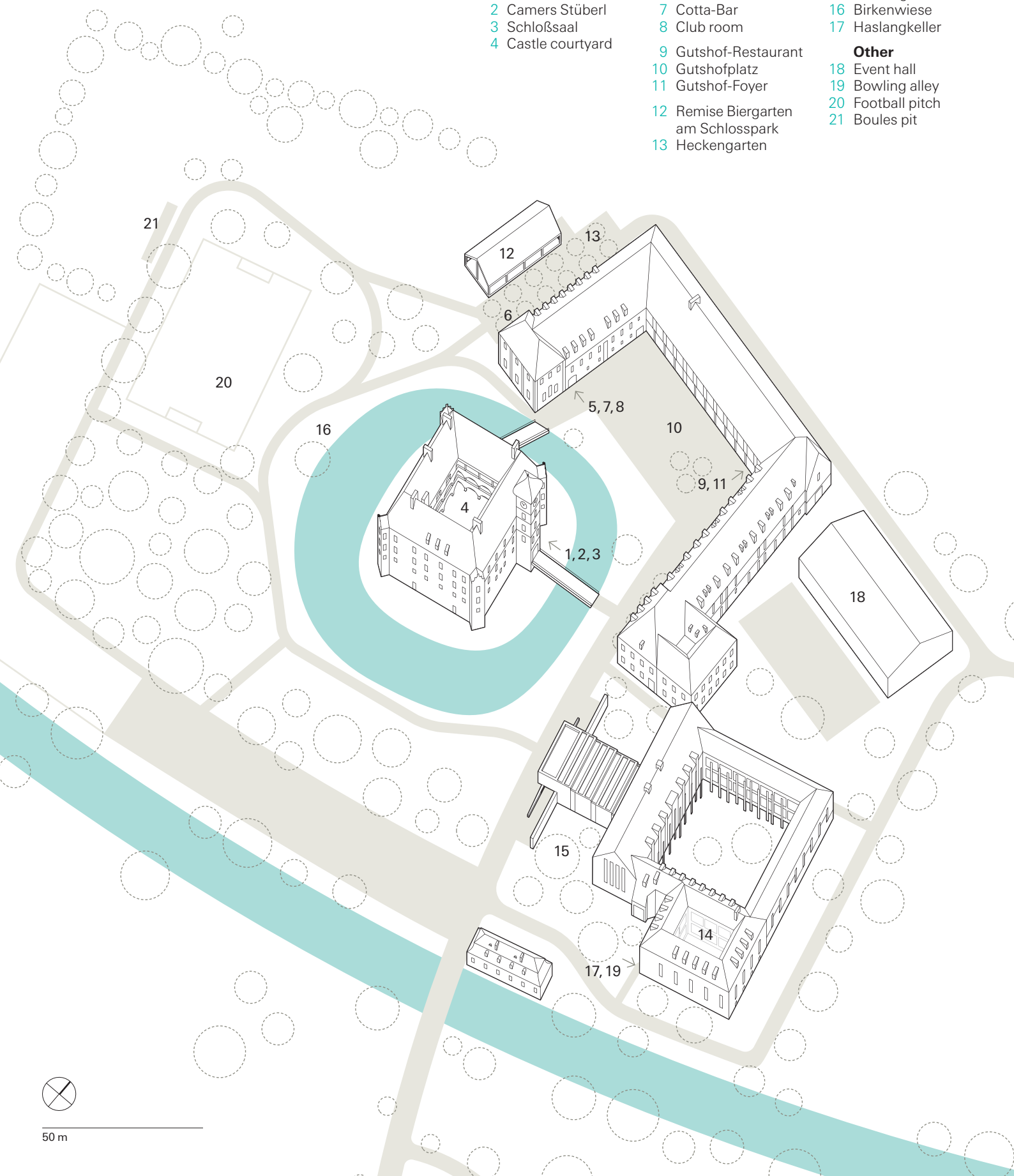
- 5 Cotta-Saal
- 6 Cotta-Terrace
- 7 Cotta-Bar
- 8 Club room
- 9 Gutshof-Restaurant
- 10 Gutshofplatz
- 11 Gutshof-Foyer
- 12 Remise Biergarten am Schlosspark
- 13 Heckengarten

### Hotel – House B

- 14 Patio
- 15 Mariengarten
- 16 Birkenwiese
- 17 Haslangkeller

### Other

- 18 Event hall
- 19 Bowling alley
- 20 Football pitch
- 21 Boules pit



50 m